

# Høglund ECS

## Engine Control and Safety System

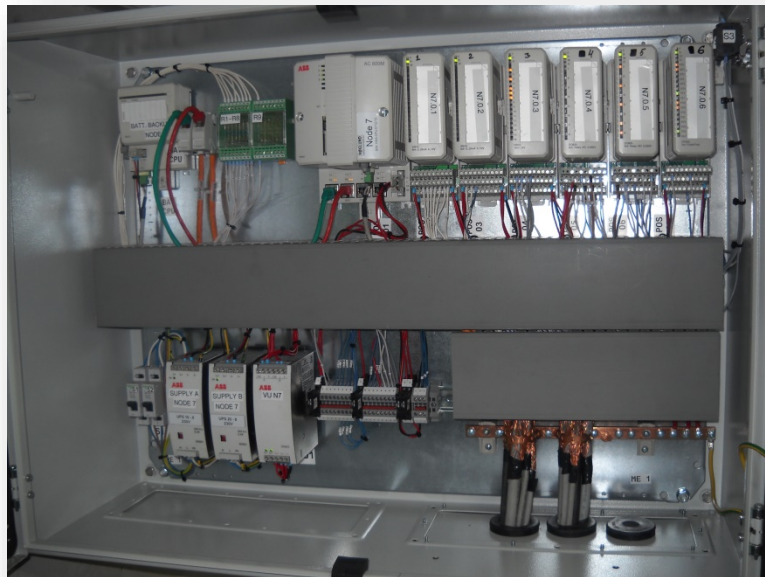
Standalone and class approved marine engine safety system. To be fitted on new installations or retrofit. Will control start, stop, start interlock, slowdown as well as shutdown of engine. Standard PLC hardware ensures quality and availability of spare parts. Direct speed measurement increases troubleshooting capabilities and reliability. Can be installed to both generator sets as well as propulsion engines.

### Benefits

- Ideal as a retrofit solution
- Fast commissioning
- Standard hardware components
- Customizable software
- Short lead time
- Seamless integration to HMA IAS

### Functions

- Controls start and stop of engine
- Shutdowns
- Start Interlocks
- HW status outputs for running, stopped, shutdown and ready to start
- Easy parameter setting
- PMS interface
- Propulsion control interface
- Switchboard interface
- Clutch Control
- Loop monitoring of required signals



### Proven concept, reliable hardware

The CSS is developed using standard hardware components from ABB available worldwide.

### Easy debugging and troubleshooting

By utilizing the GMR HMI software with all it's troubleshooting capabilities.

### Playback

As the system is based on HMA concept, it comes with data logging of all process variables every second. Faster sampling available on demand.

### Remote connection

If remote connection option is installed, HMA can logon. Generally 95% of all problems can be solved using remote connection, reduces MTTR (Mean Time To Repair) as well as having reduced service costs.

### Seamless integration

By selecting a HMA control system for your equipment you will be able to mix and match with other HMA solutions.

### Safety System

The safety system protects engine and personnel from possible damage if a plant parameter that exceeds its limit.

### Direct speed measurement

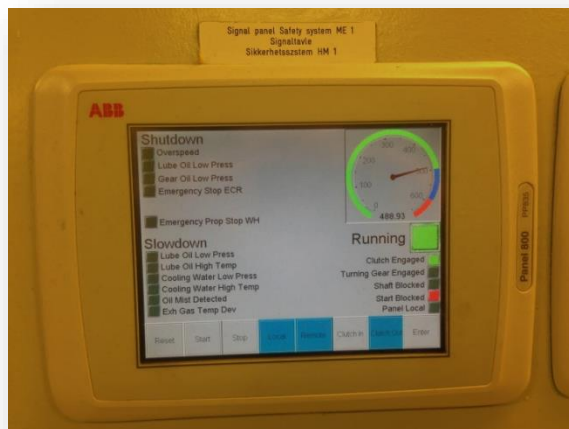
By measuring the speed directly on the PLC, there is no need for additional hardware, except the speed pickup.

### Clutch Control

System can control clutches on diesel mechanical propulsion plants.

### Local Control Panel

The system has a local control panel for local operation.



### Marine approvals

DNV GL  
ABS  
BV  
LR

### Environmental specs

Air 0°C-45°C  
Water ingress protection field equipment IP54

### Electrical

Supply voltage 230V AC or 24VDC

Models	Type of system
CSS001	Engine control and safety system Diesel Generator set
CSS002	Engine control and safety system Propulsion motor with clutch control
CSS003	Engine control and safety system with redundant CPU
Other configurations available on demand. Please contact HMA for an offer	